

FOOT AND HAND PRINTS AT BOTTOM OF VANISHING GOOSE LAKE  
RECALL LEGEND OF BEAUTIFUL PRINCESS AND HER RASH DEED

Man Professed to Be Unable to Solve Mystery, but Indians of Southwest Washington, Over in Skamania County, Come Forward With Usual Story and Answer Question; Disappointed Maiden Leaps Into Lava.



Foot and hand prints in lava bed of Goose lake. Below—Photograph at left shows relative position of prints, and a man demonstrates how they must have been impressed into soft rock. Flour was sprinkled into the prints to aid the photographer.

CHARLES OLUF OLSEN, United States forest service geologist, which will enable him to enter at Carson or White Bluffs on the Columbia in Skamania County, Washington—swinging through the Columbia forest and emerge at either end of the trip in a country of scenic wonders. Here are lava beds, caves, ice deposits, hot springs, mountain peaks and the east slope of Mount Adams.

NAME HOOT OWL RAISES BABY CHICKENS IN CAPTIVE CAGE

Mr. Sellen Spirit Found in Wild Creatures Entirely Missing During 19 Years Spent in Family Garden.

FRANCIS S. TWINGING, who works about while bird-watching at the home of Mrs. Catherine of the United States, near the town of Astoria, was introduced to the hoot owl, rather a common bird, by a man who was a close acquaintance at the time he was in the United States. He had a large enclosure at the back of his house and it did not seem to him that he was being kept in a cage.

Zipper Fastening Claimed as Paris' Own

Surprising Transformations in Women's Wear Possible.

PARIS, Dec. 4.—(Special.)—Such surprising transformations as skirts changed into trousers, into capes or into kit bags have become commonplace since Paris has made the zipper fastening her own.

Pet Escapes From Cage

It happened, during the winter of 1919, that "Baby Hoot" found her way out through an opening in the wire. She was soon recaptured in her cage.

Owls Grow to Good Size

Of course, these owls are as large as domestic fowl. They measure 22 inches from end of beak to tip of tail, and the tail is very short.

Baby Owl Tamed

"Baby Hoot" as she is known, is still in the hands of her captor, who has been tending her since she was picked up in the forest near Nonmouth, Ill., in 1919.

be ready for any sort of weather of any sort of emergency. Redfern makes a motor jumper from a piece of heavy canvas with what looks like an ordinary narrow skirt with an inverted plait on front and back. After the model had gone through a pantomime of stalling her car in a mudhole, she awkwardly, hampered by her tight skirt, tried to adjust a jack, she calmly straightened up, ripped down the zipper fastenings that were the inverted plait and stood liberated in a pair of full, short trousers.

Dental Health

By Oregon State Board of Dental Examiners

Copyright 1934. UNDER the heading, "Some People Still Believe," Dr. Irving Sifer in Oral Hygiene briefly epitomizes some of the misconceptions that have grown up around teeth and their care. This is the way he puts them:

Attention of New Yorkers Taken by Divers Things

Horse Show and Cat Show Help to Complicate Christmas.

BY JANE BROWN GORDON. NEW YORK, Dec. 4.—(Special.)—Divers things are being done in New York City that are bound to complicate Christmas.

Questions and Answers

Q.—My daughter, 8 years old, had influenza when she was 2 years old. Her teeth are pitted and my dentist tells me this is due to her previous illness.

White Matter in Three Moves

White matter in three moves. White king on K13; queen on Q1; rook on Q2; bishop on Q3; knight on K13; pawns on K14, K15, K6, Q5 and Q4.

White Matter in Two Moves

White king on K13; knight on K15; rook on Q1; bishop on Q3; knight on K13; pawns on K14, K15, K6, Q5 and Q4.

White Matter in Two Moves

White king on K13; knight on K15; rook on Q1; bishop on Q3; knight on K13; pawns on K14, K15, K6, Q5 and Q4.

White Matter in Two Moves

White king on K13; knight on K15; rook on Q1; bishop on Q3; knight on K13; pawns on K14, K15, K6, Q5 and Q4.

White Matter in Two Moves

White king on K13; knight on K15; rook on Q1; bishop on Q3; knight on K13; pawns on K14, K15, K6, Q5 and Q4.

White Matter in Two Moves

White king on K13; knight on K15; rook on Q1; bishop on Q3; knight on K13; pawns on K14, K15, K6, Q5 and Q4.

White Matter in Two Moves

White king on K13; knight on K15; rook on Q1; bishop on Q3; knight on K13; pawns on K14, K15, K6, Q5 and Q4.

White Matter in Two Moves

White king on K13; knight on K15; rook on Q1; bishop on Q3; knight on K13; pawns on K14, K15, K6, Q5 and Q4.

White Matter in Two Moves

White king on K13; knight on K15; rook on Q1; bishop on Q3; knight on K13; pawns on K14, K15, K6, Q5 and Q4.

White Matter in Two Moves

White king on K13; knight on K15; rook on Q1; bishop on Q3; knight on K13; pawns on K14, K15, K6, Q5 and Q4.

White Matter in Two Moves

White king on K13; knight on K15; rook on Q1; bishop on Q3; knight on K13; pawns on K14, K15, K6, Q5 and Q4.

Chess and Checkers

Contributions of games, endings, problems and items of interest, criticism and news solicited. Send direct to 148 East Thirty-fifth street, Portland Chess and Checker club, Worcester building, Third and Oak streets, fourth floor.

Vienna opening. Played September 24, 1915. Rabinovitch-White. Bogoljubow-Black.

White matter in three moves. White king on K13; queen on Q1; rook on Q2; bishop on Q3; knight on K13; pawns on K14, K15, K6, Q5 and Q4.

White matter in two moves. White king on K13; knight on K15; rook on Q1; bishop on Q3; knight on K13; pawns on K14, K15, K6, Q5 and Q4.

White matter in two moves. White king on K13; knight on K15; rook on Q1; bishop on Q3; knight on K13; pawns on K14, K15, K6, Q5 and Q4.

White matter in two moves. White king on K13; knight on K15; rook on Q1; bishop on Q3; knight on K13; pawns on K14, K15, K6, Q5 and Q4.

White matter in two moves. White king on K13; knight on K15; rook on Q1; bishop on Q3; knight on K13; pawns on K14, K15, K6, Q5 and Q4.

White matter in two moves. White king on K13; knight on K15; rook on Q1; bishop on Q3; knight on K13; pawns on K14, K15, K6, Q5 and Q4.

White matter in two moves. White king on K13; knight on K15; rook on Q1; bishop on Q3; knight on K13; pawns on K14, K15, K6, Q5 and Q4.

White matter in two moves. White king on K13; knight on K15; rook on Q1; bishop on Q3; knight on K13; pawns on K14, K15, K6, Q5 and Q4.

White matter in two moves. White king on K13; knight on K15; rook on Q1; bishop on Q3; knight on K13; pawns on K14, K15, K6, Q5 and Q4.

White matter in two moves. White king on K13; knight on K15; rook on Q1; bishop on Q3; knight on K13; pawns on K14, K15, K6, Q5 and Q4.

White matter in two moves. White king on K13; knight on K15; rook on Q1; bishop on Q3; knight on K13; pawns on K14, K15, K6, Q5 and Q4.

White matter in two moves. White king on K13; knight on K15; rook on Q1; bishop on Q3; knight on K13; pawns on K14, K15, K6, Q5 and Q4.

White matter in two moves. White king on K13; knight on K15; rook on Q1; bishop on Q3; knight on K13; pawns on K14, K15, K6, Q5 and Q4.

White matter in two moves. White king on K13; knight on K15; rook on Q1; bishop on Q3; knight on K13; pawns on K14, K15, K6, Q5 and Q4.

White matter in two moves. White king on K13; knight on K15; rook on Q1; bishop on Q3; knight on K13; pawns on K14, K15, K6, Q5 and Q4.

White matter in two moves. White king on K13; knight on K15; rook on Q1; bishop on Q3; knight on K13; pawns on K14, K15, K6, Q5 and Q4.

White matter in two moves. White king on K13; knight on K15; rook on Q1; bishop on Q3; knight on K13; pawns on K14, K15, K6, Q5 and Q4.

White matter in two moves. White king on K13; knight on K15; rook on Q1; bishop on Q3; knight on K13; pawns on K14, K15, K6, Q5 and Q4.

White matter in two moves. White king on K13; knight on K15; rook on Q1; bishop on Q3; knight on K13; pawns on K14, K15, K6, Q5 and Q4.

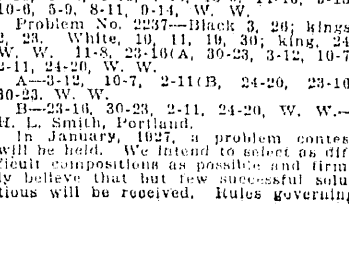
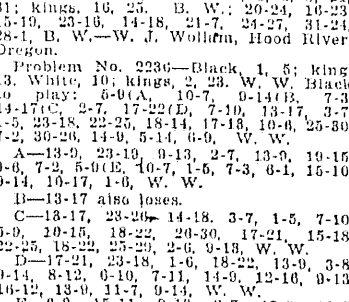
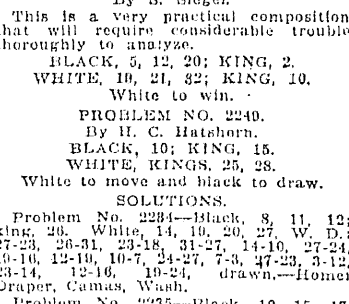
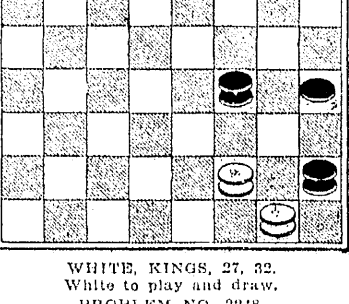
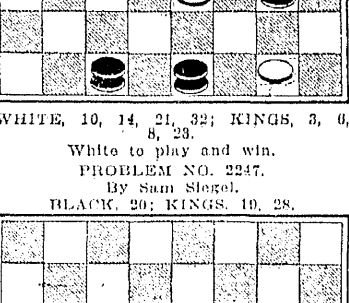
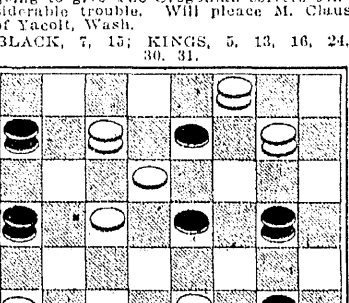
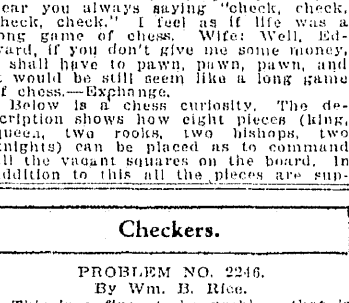
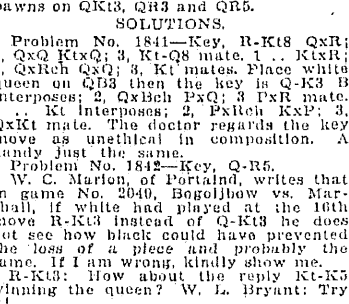
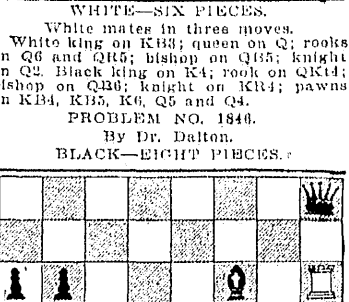
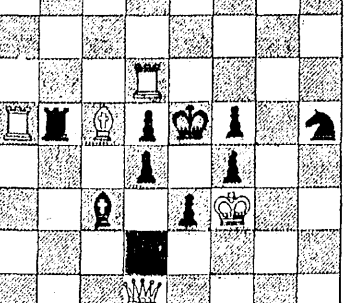
White matter in two moves. White king on K13; knight on K15; rook on Q1; bishop on Q3; knight on K13; pawns on K14, K15, K6, Q5 and Q4.

White matter in two moves. White king on K13; knight on K15; rook on Q1; bishop on Q3; knight on K13; pawns on K14, K15, K6, Q5 and Q4.

Advertisement for 'Baby Binkles' featuring a cartoon illustration of a girl and a boy. Text includes: 'Baby Binkles A MERRY LITTLE BROWNIE BY MARTHA HART', 'Wont you stay all night with us, dear?', 'asked Mother when all the were washed', 'Oh, please! begged Rachel and Reuben and Benny and Brownie and Bun, all at once.', 'We-ell, said the But I will have to be off early in the morning. I promised to help a friend of mine gather. He has a big family and his wife has hurt her so she can't help this fall.', 'I will promise to get your breakfast early, agreed Mother. And now for. Will you object to sleeping with Reuben and Benny?'

Advertisement for Jackie Coogan's Hair Cut. Text: 'Jackie Coogan's Hair Cut Kicks Up Fuss. San Francisco Boobs Look That Helped Albee Make Los Angeles Famous.'

Advertisement for Los Angeles Nov. 20. Text: 'The cutting of Jackie Coogan's hair has caused more fuss than the killing of cock-robin. And all because the young angel star's hair was cut in a number of charming combinations of shades and in leathers of fascinating suppleness while the price is moderate when one considers that she is washed and gotten up for a pair of not-to-nothing slippers.'



White matter in two moves. White king on K13; knight on K15; rook on Q1; bishop on Q3; knight on K13; pawns on K14, K15, K6, Q5 and Q4.

White matter in two moves. White king on K13; knight on K15; rook on Q1; bishop on Q3; knight on K13; pawns on K14, K15, K6, Q5 and Q4.

White matter in two moves. White king on K13; knight on K15; rook on Q1; bishop on Q3; knight on K13; pawns on K14, K15, K6, Q5 and Q4.

White matter in two moves. White king on K13; knight on K15; rook on Q1; bishop on Q3; knight on K13; pawns on K14, K15, K6, Q5 and Q4.

White matter in two moves. White king on K13; knight on K15; rook on Q1; bishop on Q3; knight on K13; pawns on K14, K15, K6, Q5 and Q4.

White matter in two moves. White king on K13; knight on K15; rook on Q1; bishop on Q3; knight on K13; pawns on K14, K15, K6, Q5 and Q4.

White matter in two moves. White king on K13; knight on K15; rook on Q1; bishop on Q3; knight on K13; pawns on K14, K15, K6, Q5 and Q4.

White matter in two moves. White king on K13; knight on K15; rook on Q1; bishop on Q3; knight on K13; pawns on K14, K15, K6, Q5 and Q4.

White matter in two moves. White king on K13; knight on K15; rook on Q1; bishop on Q3; knight on K13; pawns on K14, K15, K6, Q5 and Q4.

White matter in two moves. White king on K13; knight on K15; rook on Q1; bishop on Q3; knight on K13; pawns on K14, K15, K6, Q5 and Q4.

White matter in two moves. White king on K13; knight on K15; rook on Q1; bishop on Q3; knight on K13; pawns on K14, K15, K6, Q5 and Q4.